



**AVIATION DEPARTMENT - Fort Lauderdale-Hollywood International Airport**  
2200 SW 45th Street, Suite 101 • Dania Beach, Florida 33312 • 954-359-6100

## Welcome to the Ft. Lauderdale-Hollywood International Airport (FLL) Public Information Workshop for the Part 150 Airport Noise Compatibility Planning Study

The Broward County Aviation Department (BCAD) welcomes and thanks you for attending this public workshop for the Part 150 Study for Fort Lauderdale-Hollywood International Airport (FLL).

BCAD recently began a study to improve the compatibility of FLL with the surrounding communities. This study, known as a “Part 150 Study,” will follow the process outlined in Title 14 of the Code of Federal Regulations (CFR) Part 150, *Airport Noise Compatibility Planning*.

The workshop will be an “open house” format and there will be no formal presentation. This will provide attendees with the maximum opportunity for one-on-one interaction and sharing of information and concerns. Topics include the Part 150 Study process, project schedule, an introduction to noise, and information about modeling aircraft noise exposure. Now is the time to participate and express your concerns about noise generated by aircraft operating at FLL. Feedback received will be considered throughout the development of the Study.

The following pages of this handout will guide you through each of the seven stations available at tonight’s workshop. We encourage you to visit each station and review the materials provided. Members of the study team are available to answer any questions you have.

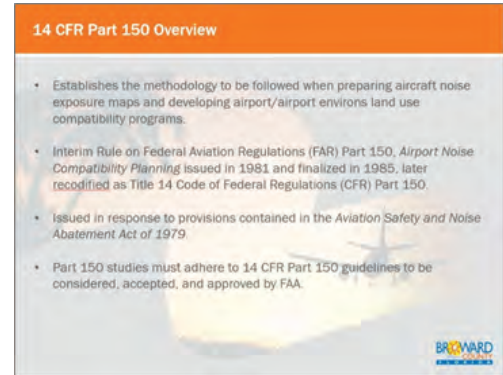


## STATION 1: THE PART 150 STUDY PROCESS

Station 1 will guide you through the study process dictated by 14 CFR Part 150, the federal regulation that establishes the methodology to be followed when determining aircraft noise exposure on the surrounding communities as well as developing a program to ensure the compatibility of surrounding land uses with the anticipated noise exposure.

### List of Presentation Boards at Station 1:

1. 14 CFR Part 150 Overview
2. Why Conduct a 14 CFR Part 150 Study
3. Key Issues for this Part 150 Study
4. Additional Part 150 Study Information
5. Regulatory Framework
6. Phases of a Part 150 Study
7. General Study Process
8. 14 CFR Part 150 Terminology

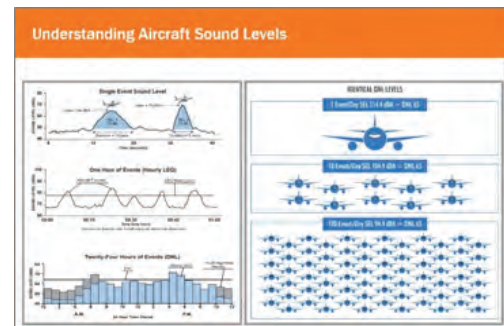


## STATION 2: UNDERSTANDING NOISE AND SOUND LEVEL METRICS

Station 2 contains five boards that explain the science behind acoustics and the various sound level metrics used in a Part 150 Study. It also provides information regarding various land uses and noise sensitive sites as well as providing the location of existing noise monitoring locations surrounding FLL.

### List of Presentation Boards at Station 2:

1. Day-Night Average Sound Level (DNL)
2. Understanding Aircraft Sound Levels
3. DNL Noise Contour Example
4. Part 150 Study Overview – Land Use Compatibility
5. Noise Monitoring Sites



## STATION 3: STAKEHOLDER OUTREACH

Station 3 discusses the stakeholder outreach program designed to involve local officials, jurisdictions, agencies, FLL tenants, and the public in the Part 150 Study process. Their involvement is essential to the success of the overall study.

### List of Presentation Boards at Station 3:

1. Public Outreach Plan Development and Initial Workshops
2. Purpose and Objectives of the Technical Committee (TC)
3. TC Members
4. Preliminary Part 150 Study Schedule

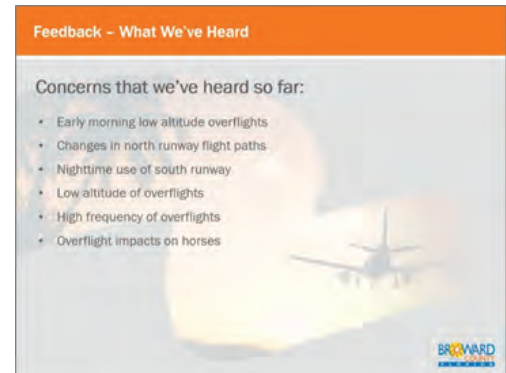


## STATION 4: FLL OVERVIEW

Station 4 provides a general overview of FLL as well as data and statistics regarding the operational history and growth of the airport. This data is required to accurately model the Noise Exposure Maps in accordance with the 14 CFR Part 150 regulation.

### List of Presentation Boards at Station 4:

1. FLL Overview (Aerial Photograph)
2. FLL Overview (Usage Statistics)
3. Data Collection– 2016 Operational Information
4. Aircraft Activity Forecast

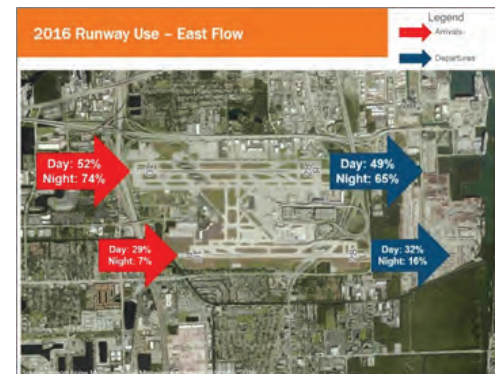


## STATION 5: RUNWAY USE

Station 5 provides operational data related to the use of the two primary runways (Runways 10L-28R and 10R-28L) at FLL, including utilization shown between day/night and east/west flow uses.

### List of Presentation Boards at Station 5:

1. 2016 Runway Use – East Flow
2. 2016 Runway Use – West Flow
3. Runway Use
4. 2016 Flight Track Densities – East Flow Arrivals
5. 2016 Flight Track Densities – East Flow Departures
6. 2016 Flight Track Densities – West Flow Arrivals
7. 2016 Flight Track Densities – West Flow Departures

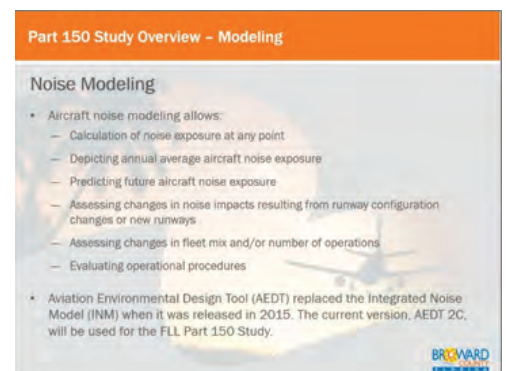


## STATION 6: NOISE MODELING

Station 6 provides a brief introduction to the noise modeling process used in Part 150 studies including the data requirements and collection process.

### List of Presentation Boards at Station 6:

1. Noise Modeling
2. Model Inputs
3. Aviation Environmental Design Tool (AEDT) Inputs

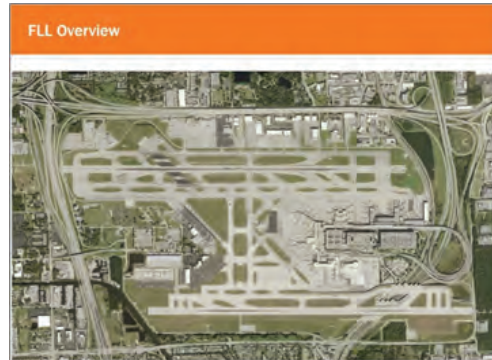


## STATION 7: STAKEHOLDER INPUT

Station 7 outlines the existing noise program and some of the concerns that we've heard so far in the FLL Part 150 Study. It also provides information on how to stay informed and provide feedback throughout the Study. Stakeholder input is an important part of the process and will continue to be solicited throughout the Study.

### List of Presentation Boards at Station 7:

1. Existing Noise Program Overview
2. Part 150 Overview – FAQs
3. Feedback – What We've Heard
4. Study Website
5. How to Provide Comments



Thank you for attending tonight's workshop.  
You may provide written comments during this public workshop via the available comment forms, or you can submit comments by mail to the following address:

**Aviation Department  
C/O FLL Part 150 Study  
2200 SW 45th Street, Suite 101  
Dania Beach, FL 33312**

Please provide comments by December 1, 2017.

Updates to the Part 150 Study and additional comment options are provided on the project website at:

**[www.fllpart150.com](http://www.fllpart150.com)**

**Thank You for Your Participation!**