

APPENDIX F

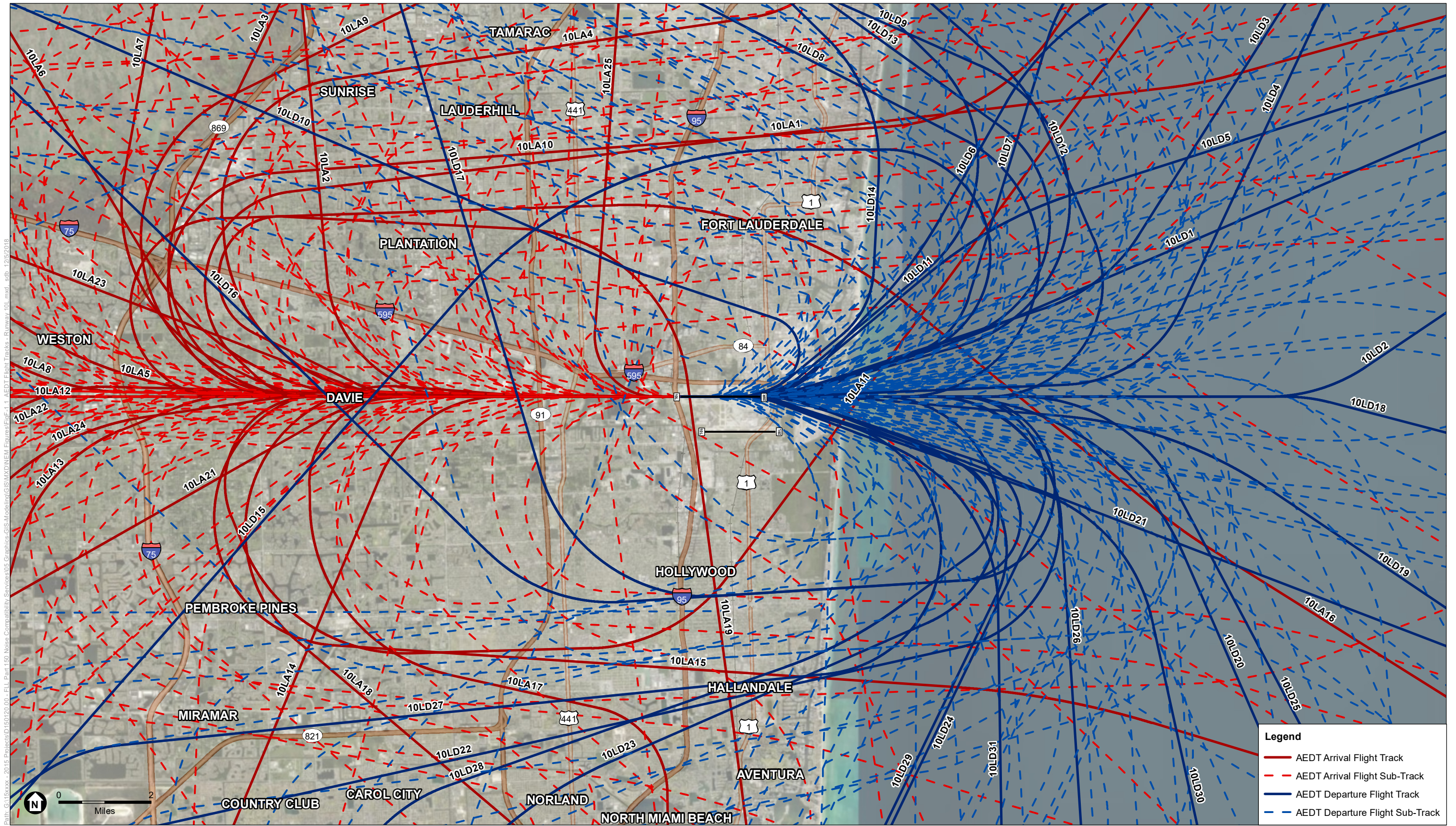
Arrival and Departure Flight Tracks

This Appendix includes the flight tracks used in the Fort Lauderdale-Hollywood International Airport Part 150 Study.

- Appendix F-1 AEDT Flight Tracks
- Appendix F-2 Radar Flight Tracks

APPENDIX F-1

AEDT Flight Tracks



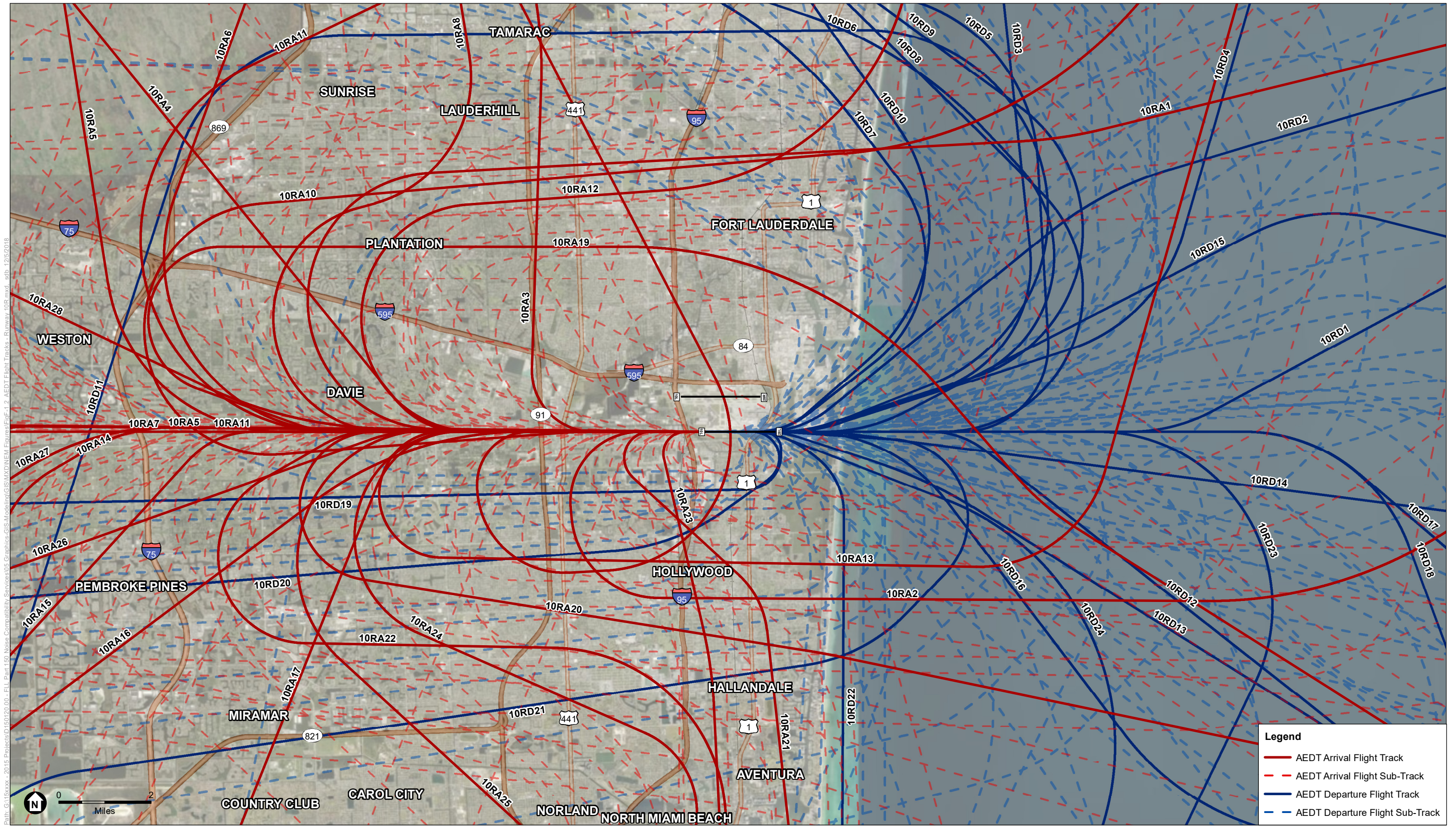
SOURCE: AEDT 2d; ESA, 2018; World Imagery (Aerial)
 NOTE: AEDT flight sub-tracks are used to replicate radar track dispersion.

Fort Lauderdale-Hollywood International Airport 14 CFR Part 150 Study . 150120

Figure F-1.1
 AEDT Flight Tracks - Runway 10L
 Fort Lauderdale-Hollywood International Airport

DRAFT FOR DELIBERATIVE PURPOSES ONLY





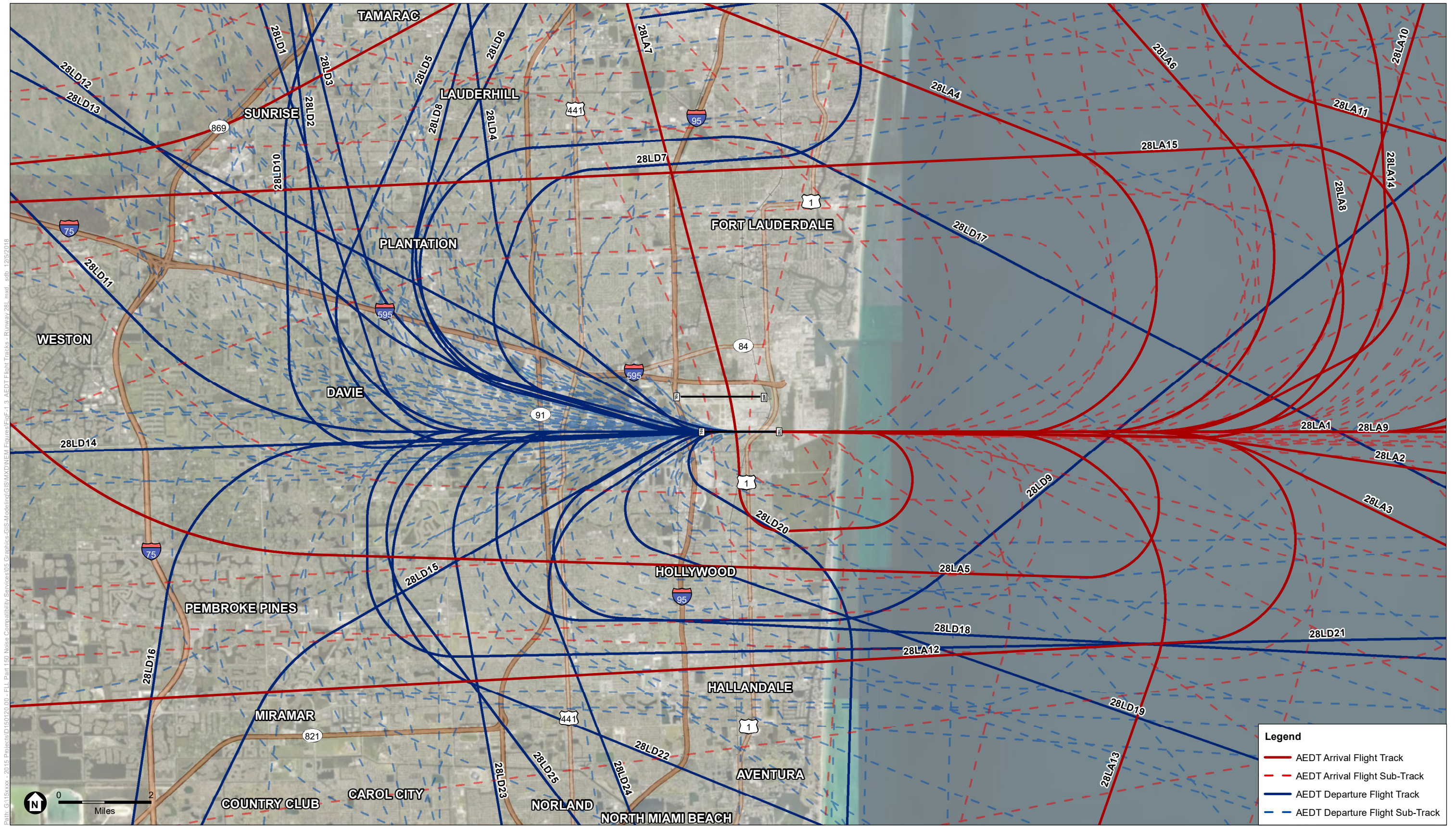
SOURCE: AEDT 2d; ESA, 2018; World Imagery (Aerial)
 NOTE: AEDT flight sub-tracks are used to replicate readar track dispersion.

Fort Lauderdale-Hollywood International Airport 14 CFR Part 150 Study . 150120

Figure F-1.2
 AEDT Flight Tracks - Runway 10R
 Fort Lauderdale-Hollywood International Airport



DRAFT FOR DELIBERATIVE PURPOSES ONLY



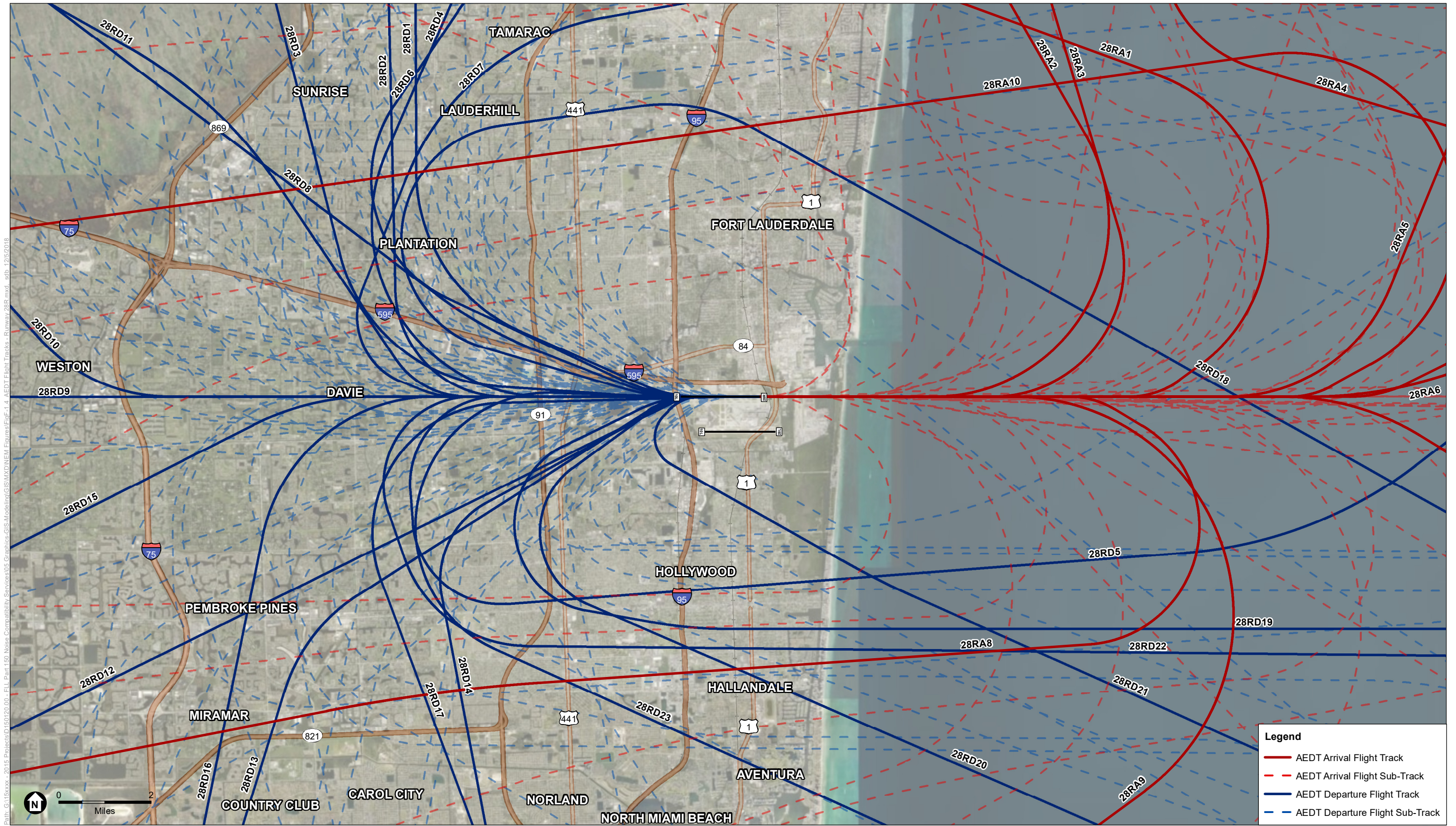
SOURCE: AEDT 2d; ESA, 2018; World Imagery (Aerial)
 NOTE: AEDT flight sub-tracks are used to replicate readar track dispersion.

Fort Lauderdale-Hollywood International Airport 14 CFR Part 150 Study . 150120

Figure F.1-3
 AEDT Flight Tracks - Runway 28L
 Fort Lauderdale-Hollywood International Airport



DRAFT FOR DELIBERATIVE PURPOSES ONLY



SOURCE: AEDT 2d; ESA, 2018; World Imagery (Aerial)
 NOTE: AEDT flight sub-tracks are used to replicate readar track dispersion.

Fort Lauderdale-Hollywood International Airport 14 CFR Part 150 Study . 150120

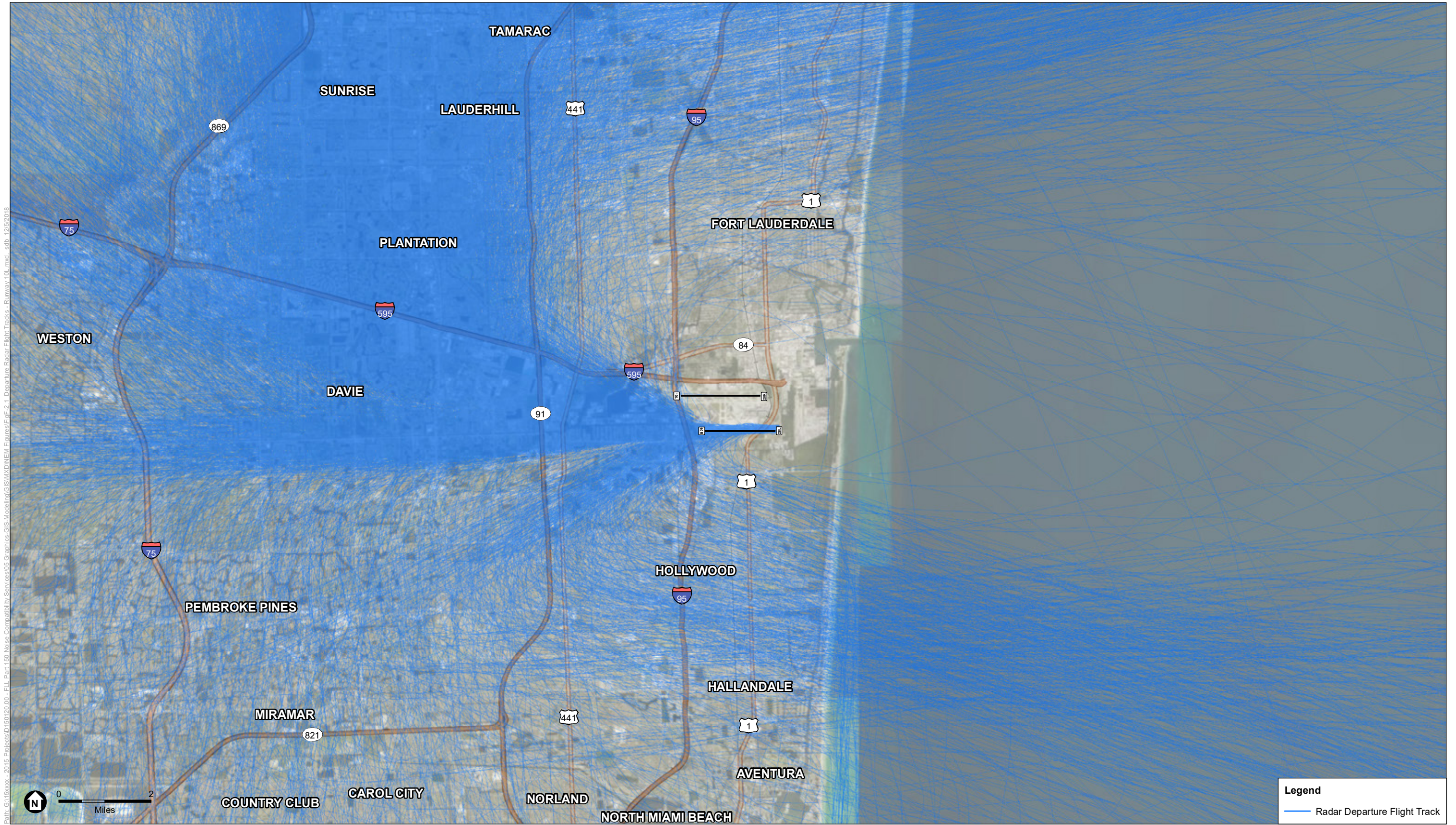
Figure F-1.4
 AEDT Flight Tracks - Runway 28R
 Fort Lauderdale-Hollywood International Airport

DRAFT FOR DELIBERATIVE PURPOSES ONLY



APPENDIX F-2

Radar Flight Tracks



Path: G:\15xxxx - 2015 Projects\150120.00 - FLL Part 150 Noise Compatibility Services\05 Graphics-GIS\Modeling\GIS\MDX\NEM Figures\Fig-F-2.1 Departure Radar Flight Tracks - Runway 10L.mxd, sdb, 12/5/2018

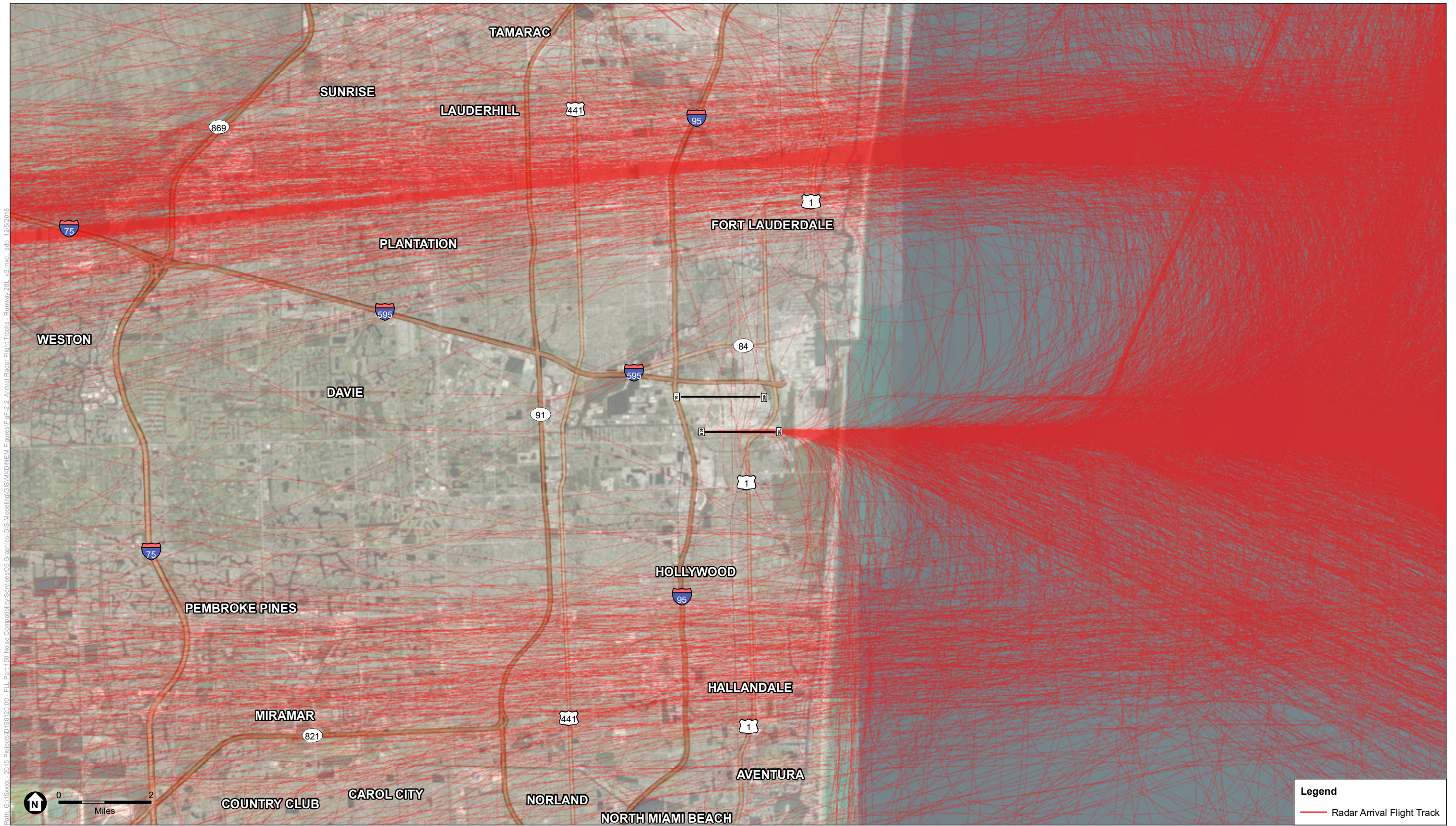
SOURCE: BCAD Airport Noise and Operations Management System (ANOMS), 2017; ESA, 2018; World Imagery (Aerial)

Fort Lauderdale-Hollywood International Airport 14 CFR Part 150 Study . 150120

Figure F-2.1
 Departure Radar Flight Tracks - Runway 28L
 Fort Lauderdale-Hollywood International Airport



DRAFT FOR DELIBERATIVE PURPOSES ONLY



Path: G:\15xxxx - 2015 Projects\150120_00 - FLL Part 150 Noise Compatibility Services\05 Graphics-GIS\Modelling\GIS\MD\NEW\Figures\FigF-2.2 Arrival Radar Flight Tracks - Runway 28L - 02.mxd. sdb. 12/5/2018

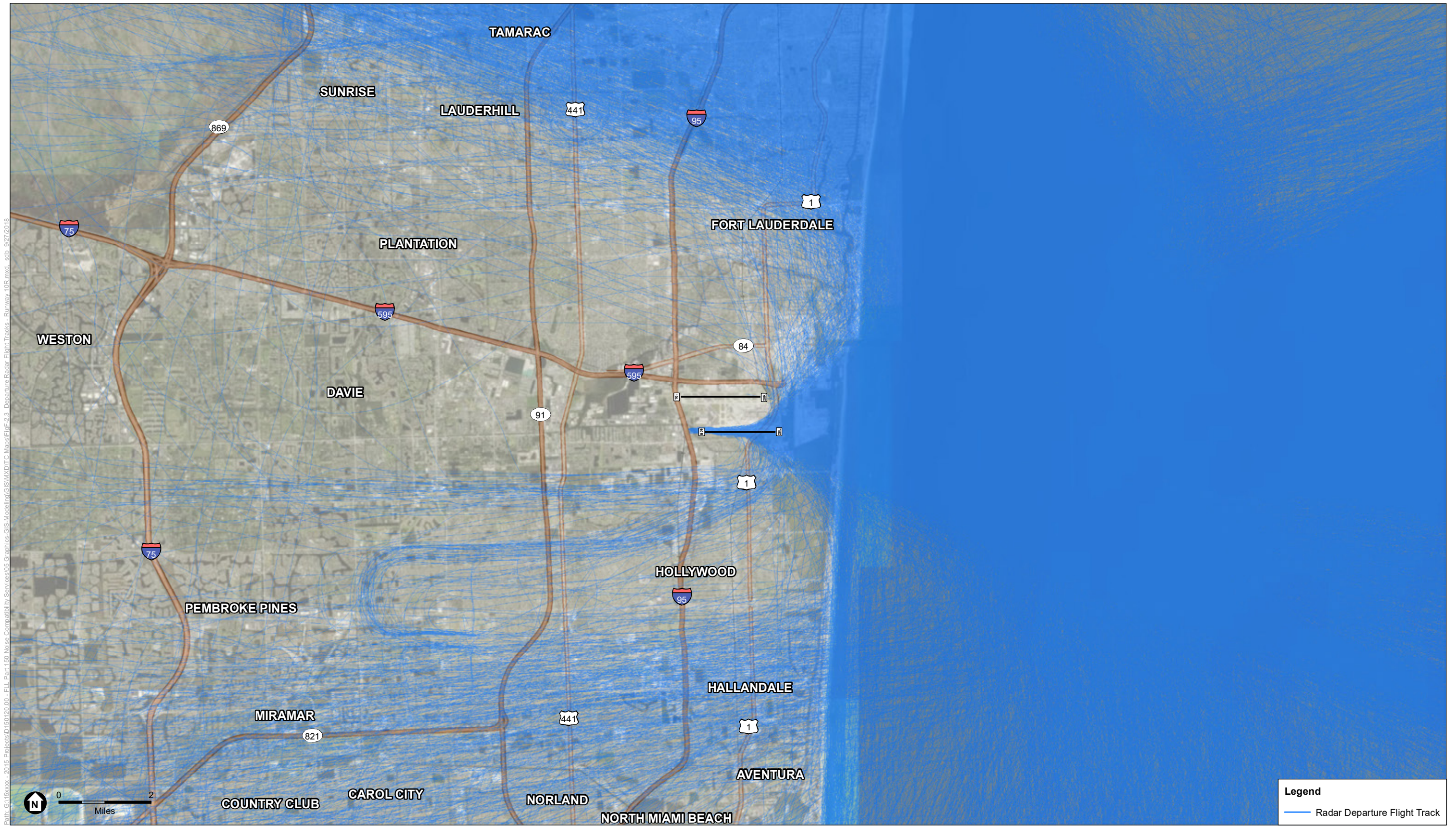
SOURCE: BCAD Airport Noise and Operations Management System (ANOMS), 2017; ESA, 2018; World Imagery (Aerial)

Fort Lauderdale-Hollywood International Airport 14 CFR Part 150 Study . 150120

Figure F-2.2
 Arrival Radar Flight Tracks - Runway 28L
 Fort Lauderdale-Hollywood International Airport



DRAFT FOR DELIBERATIVE PURPOSES ONLY



Path: G:\15xxxx - 2015 Projects\150120.00 - FLL Part 150 Noise Compatibility Services\05 Graphics-GIS\Modeling\GIS\MXD\10R Maps\FigF-2.3 - Departure Radar Flight Tracks - Runway 10R.mxd - sbb - 9/27/2018

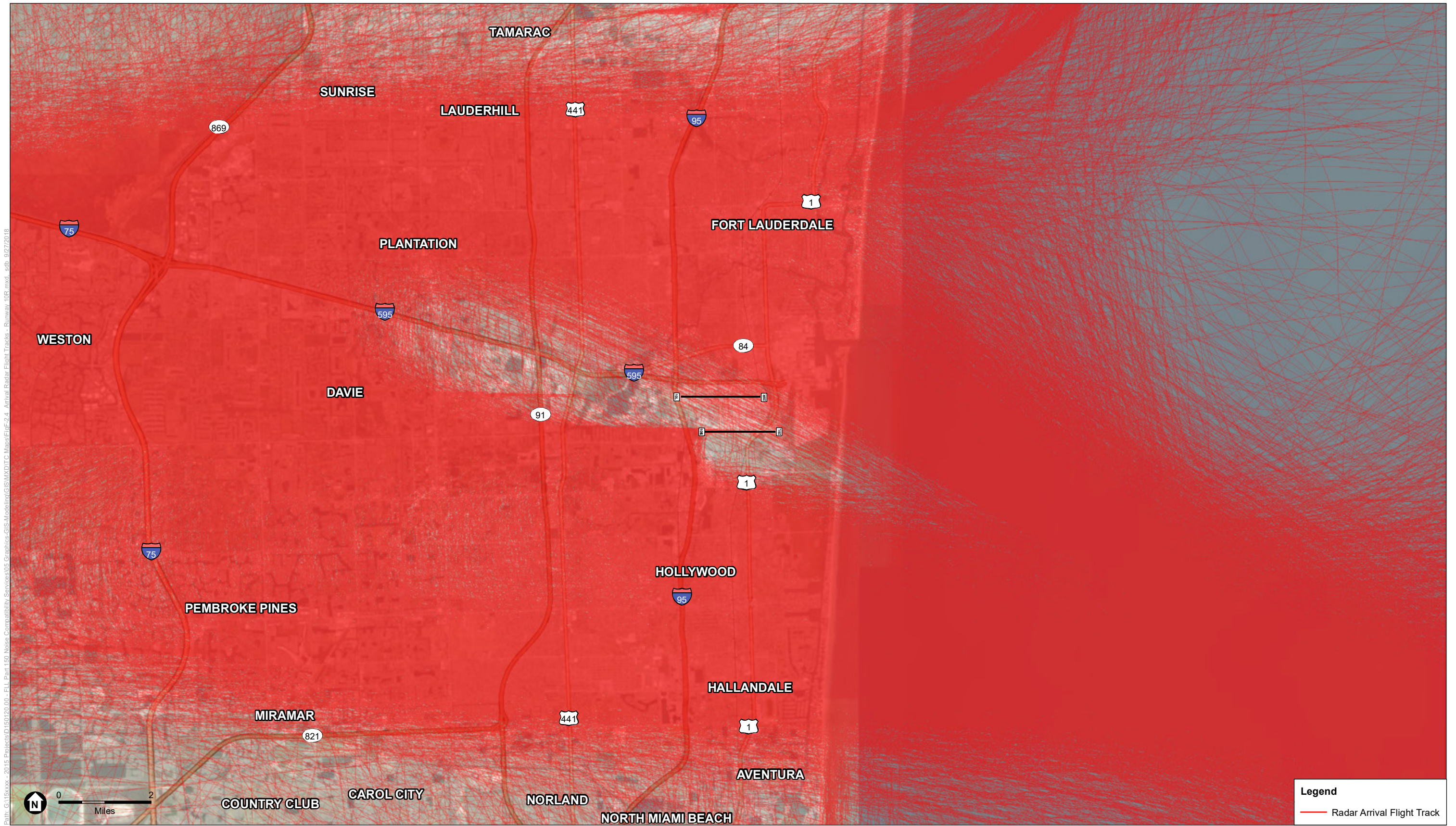
SOURCE: BCAD Airport Noise and Operations Management System (ANOMS), 2017; ESA, 2018; World Imagery (Aerial)

Fort Lauderdale-Hollywood International Airport 14 CFR Part 150 Study . 150120

Figure F-2.3
 Departure Radar Flight Tracks - Runway 10R
 Fort Lauderdale-Hollywood International Airport



DRAFT FOR DELIBERATIVE PURPOSES ONLY



Path: G:\15xxxx - 2015 Projects\150120_00 - FLL Part 150 Noise Compatibility Services\05 Graphics-GIS\Modelling\GIS\MXD\150120 Maps\Fig-F-2.4 Arrival Radar Flight Tracks - Runway 10R.mxd, sdb 9/27/2018

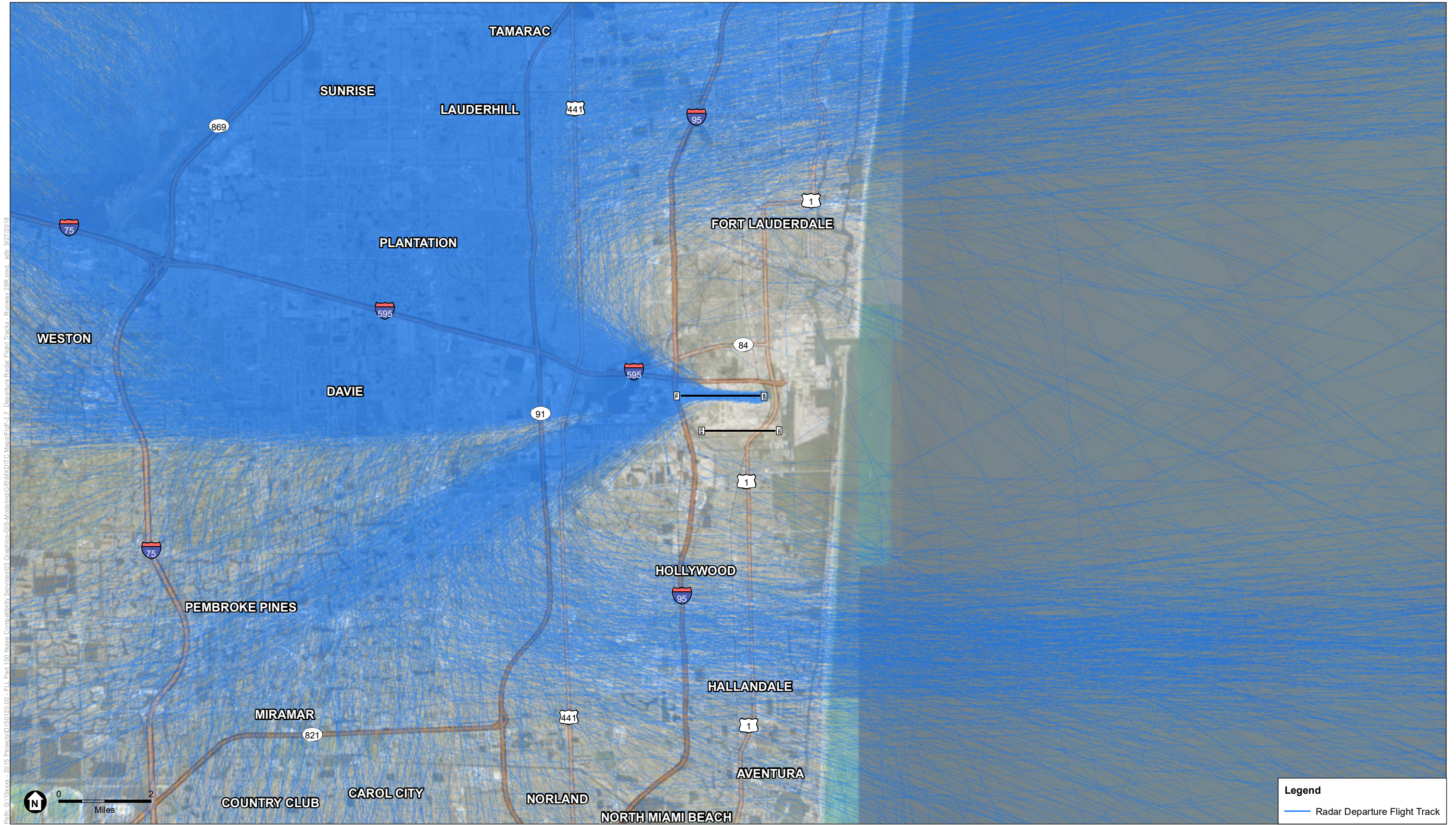
SOURCE: BCAD Airport Noise and Operations Management System (ANOMS), 2017; ESA, 2018; World Imagery (Aerial)

Fort Lauderdale-Hollywood International Airport 14 CFR Part 150 Study . 150120

Figure F-2.4
 Arrival Radar Flight Tracks - Runway 10R
 Fort Lauderdale-Hollywood International Airport



DRAFT FOR DELIBERATIVE PURPOSES ONLY



Path: G:\15xxxx - 2015 Projects\150120_00 - FLL Part 150 Noise Compatibility Services\05 Graphics-GIS\Modelling\GIS\Modelling\Mapa\FigF-2.7 - Departure Radar Flight Tracks - Runway 28R.mxd, sdb, 9/27/2018

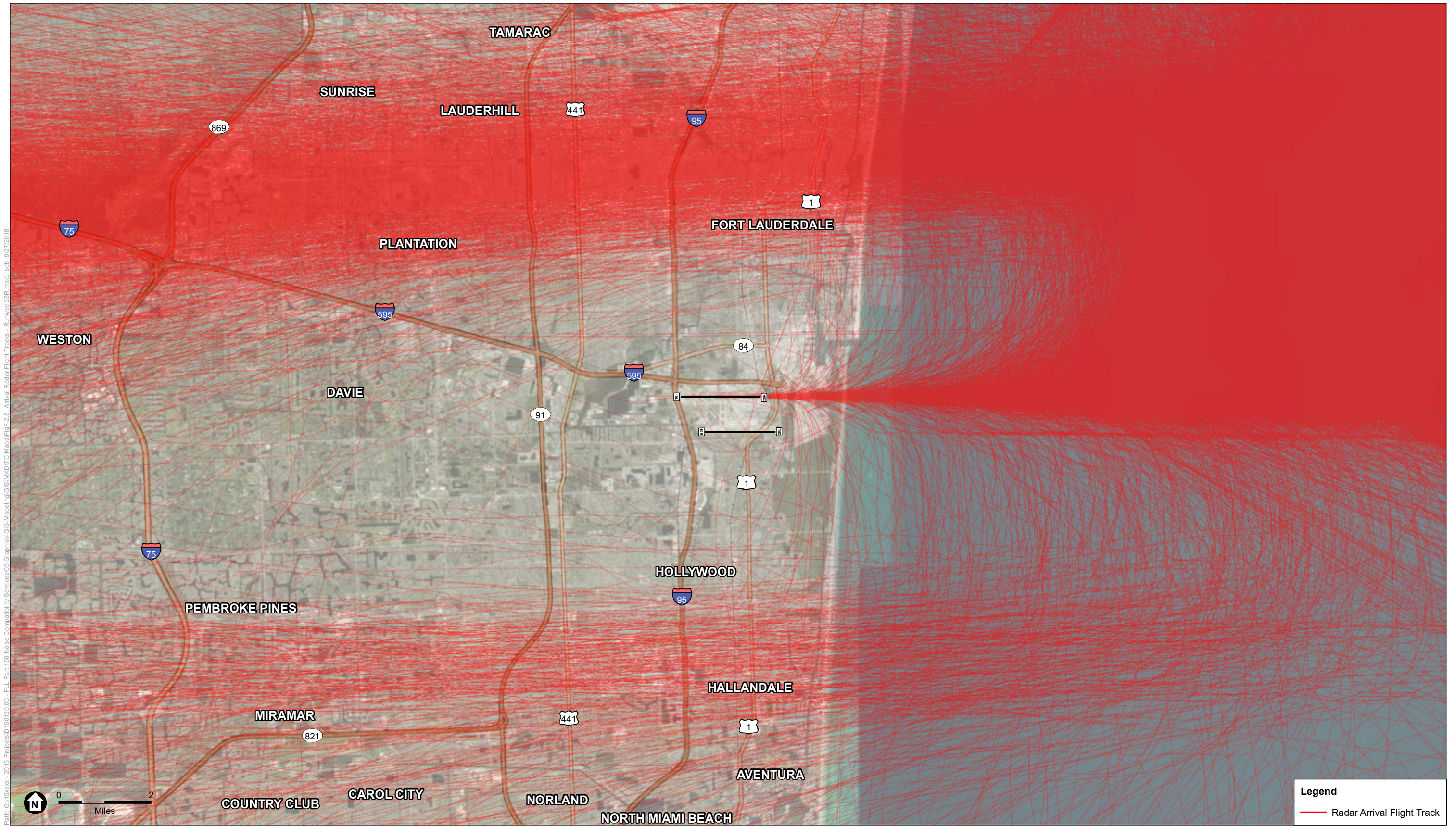
SOURCE: BCAD Airport Noise and Operations Management System (ANOMS), 2017; ESA, 2018; World Imagery (Aerial)

Fort Lauderdale-Hollywood International Airport 14 CFR Part 150 Study . 150120

Figure F-2.5
 Departure Radar Flight Tracks - Runway 28R
 Fort Lauderdale-Hollywood International Airport



DRAFT FOR DELIBERATIVE PURPOSES ONLY



Path: G:\15xxxx-2015 Projects\150120.00 - FL Part 150 Noise Compatibility Services\05 Graphics-GIS\Modelling\GIS\MXD\150 Maps\FigF-2.6 Arrival Radar Flight Tracks - Runway 28R.mxd, sdb 9/27/2018

SOURCE: BCAD Airport Noise and Operations Management System (ANOMS), 2017; ESA, 2018; World Imagery (Aerial)

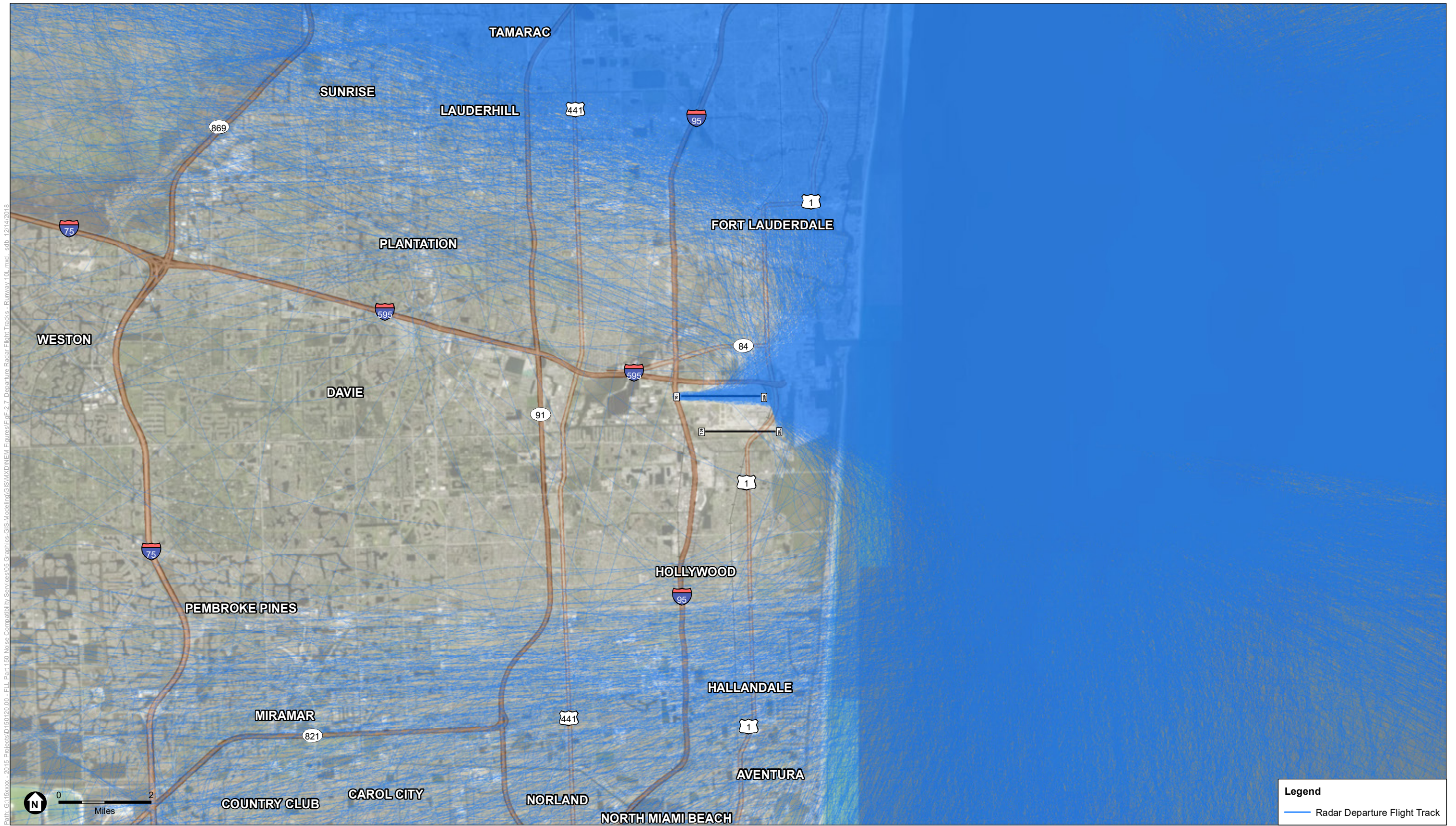
Fort Lauderdale-Hollywood International Airport 14 CFR Part 150 Study . 150120

Figure F-2.6

Arrival Radar Flight Tracks - Runway 28R
Fort Lauderdale-Hollywood International Airport

DRAFT FOR DELIBERATIVE PURPOSES ONLY





Path: G:\15xxxx - 2015 Projects\150120.00 - FLL Part 150 Noise Compatibility Services\05 Graphics-GIS\Modeling\GIS\MDX\NEM_Figures\Fig-F-2.7 Departure Radar Flight Tracks - Runway 10L.mxd, sdb, 12/14/2018

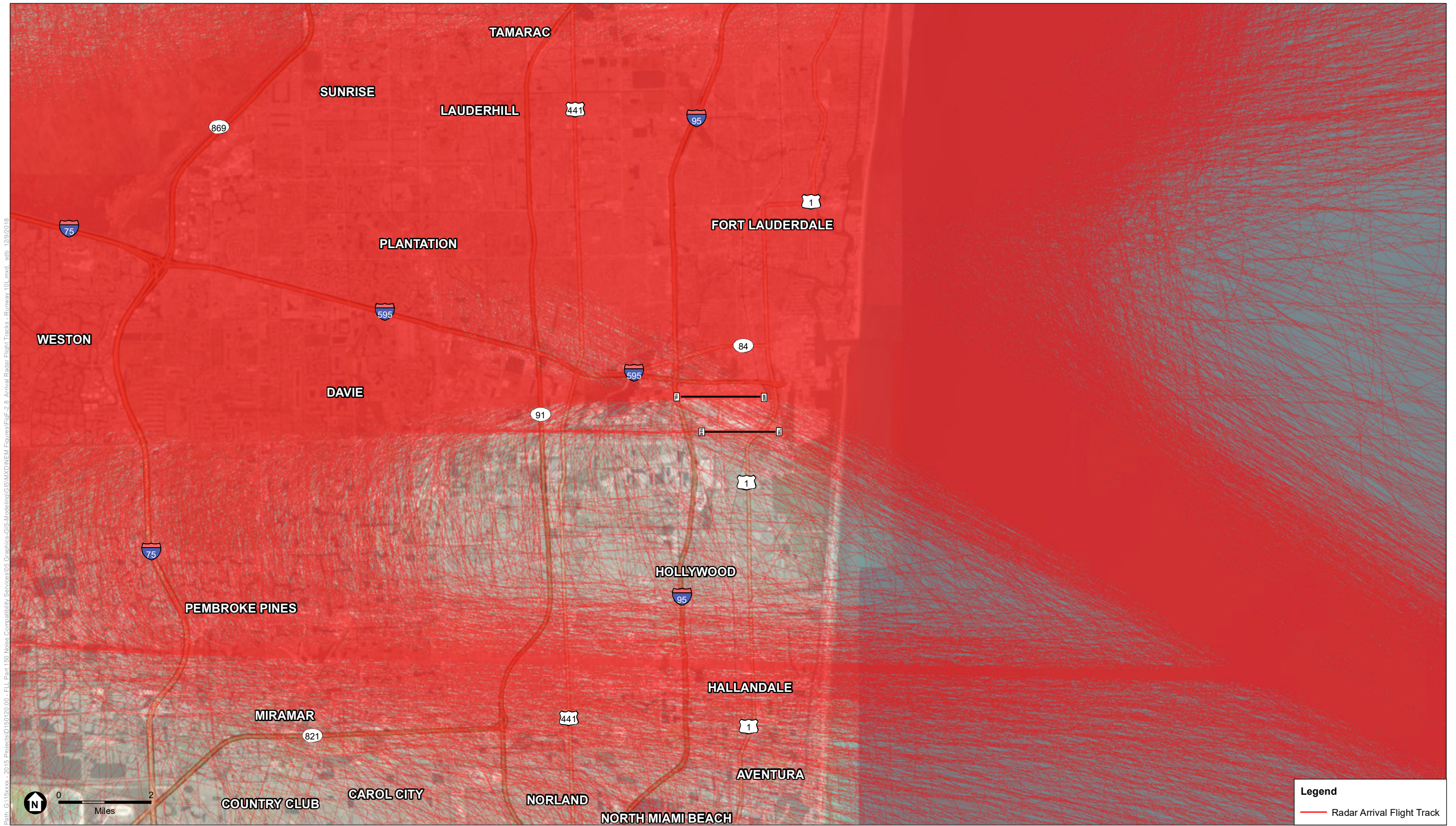
SOURCE: BCAD Airport Noise and Operations Management System (ANOMS), 2017; ESA, 2018; World Imagery (Aerial)

Fort Lauderdale-Hollywood International Airport 14 CFR Part 150 Study . 150120

Figure F-2.7
 Departure Radar Flight Tracks - Runway 10L
 Fort Lauderdale-Hollywood International Airport



DRAFT FOR DELIBERATIVE PURPOSES ONLY



Path: G:\15xxxx - 2015 Projects\150120.00 - FLL Part 150 Noise Compatibility Services\05 Graphics-GIS\Modeling\GIMXD\NEW\Figures\Fig-2.8 Arrival Radar Flight Tracks - Runway 10L.mxd, sbb - 12/9/2018

SOURCE: BCAD Airport Noise and Operations Management System (ANOMS), 2017; ESA, 2018; World Imagery (Aerial)

Fort Lauderdale-Hollywood International Airport 14 CFR Part 150 Study . 150120

Figure F-2.8
 Arrival Radar Flight Tracks - Runway 10L
 Fort Lauderdale-Hollywood International Airport



DRAFT FOR DELIBERATIVE PURPOSES ONLY